

Child Sexual Exploitation Service Offer

Introduction:

Since 2015, Staffordshire County Council jointly commissioned service providers to deliver direct work intervention for children who reside within the Staffordshire border, who are identified as being at risk of/exposed to Child Sexual Exploitation (CSE).

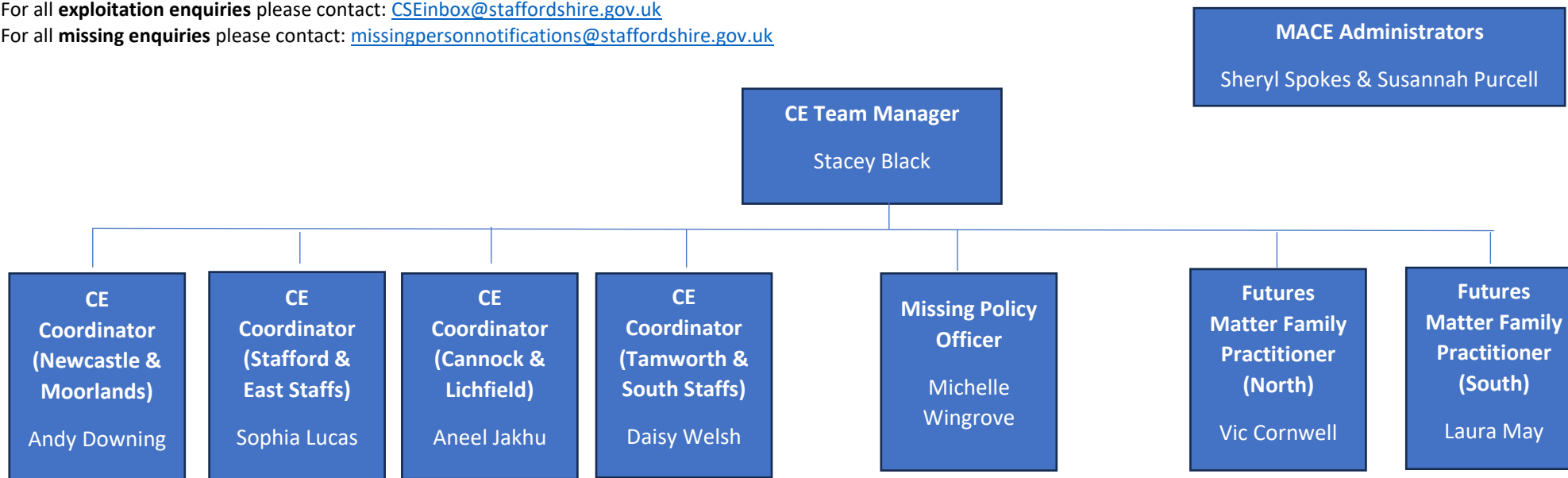
From 1st April 2024, this service has been brought in house, and will sit within the Local Authority Child Exploitation Team. The CE Team has grown significantly and is currently looking to embed a more “district level” response to CE across the County and proposes a flexible service offer to children and families in Staffordshire.

The CSE team, works closely with our colleagues within the Commissioned CCE Service (Catch22) and YOS Prevention to ensure children receive direct work at the right time, from the right service and all referrals are discussed within the Weekly Triage Meeting to ensure regular review.

The Team:

For all **exploitation enquiries** please contact: CSEinbox@staffordshire.gov.uk

For all **missing enquiries** please contact: missingpersonnotifications@staffordshire.gov.uk



Child Sexual Exploitation Service Offer

Service offer:

The service will operate a North and South Model across Staffordshire, providing solution focused and child centred interventions to reduce the risk of Child Sexual Exploitation. The Futures Matter Family Practitioners will provide direct work intervention and bespoke education and awareness raising. This can be offered to **any Staffordshire child under the age of 18** and residing **within the Staffordshire area** (where possible, a more flexible offers of support can be discussed for Staffordshire children placed outside of Staffordshire's area through discussion with the Team). Intervention will support children who are deemed vulnerable to or suspected of being at risk of CSE and where appropriate, those who are at evidenced risk of CSE.

Programmes of support will consist of:

- Bespoke 8-week programme of direct work (with 1-2 visits per week minimum), with a possible extension of an additional 4 weeks where required for rapport building or to work with children who have identified additional needs.
- Bespoke plans will be built to reflect a restorative approach to working with the child and their parents/carers to reduce the risk of CSE.
- Potential follow up sessions with Parents/Carer where capacity allows and/or where it is felt that a child is not yet ready to access support.
- General support to be offered as part of the child's multi-agency plans
- Resource packs are also available at request, to support professionals who have established working relationships with children.

Bespoke packages will be built using resources and tools to focus on:

- Health & Wellbeing
- Grooming
- Sexual health
- Keeping Safe
- Social networks and Relationships
- Community, boundaries and actions
- Consent and the law
- Safety planning
- Risk & decision making

For further information regarding the weekly Triage Meeting, please contact the Child Exploitation Team Manager: stacey.black1@staffordshire.gov.uk

